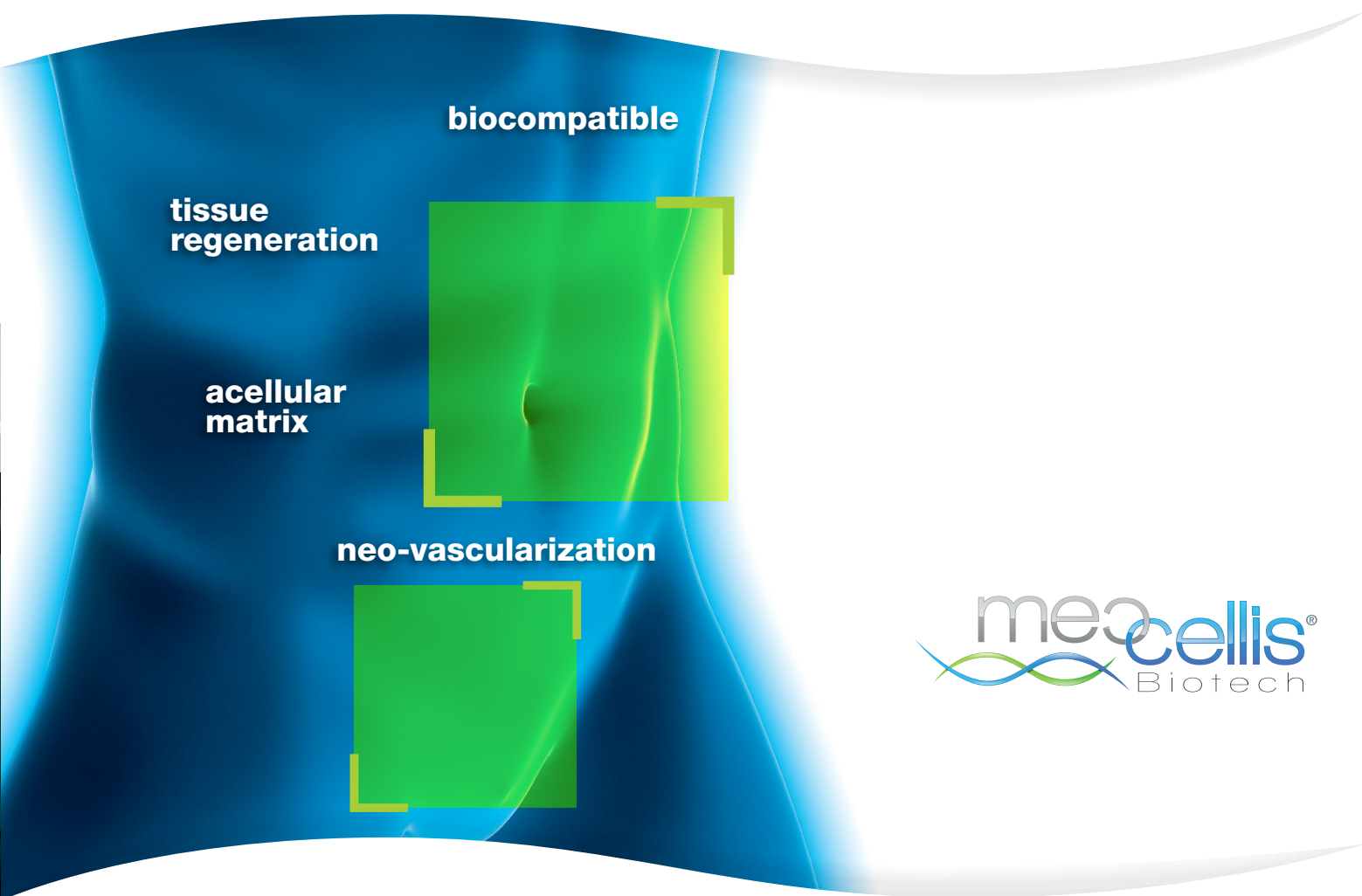




DIGESTIVE & PELVIC SURGERIES

Acellular dermal matrix for reconstruction, rebuilding
and regeneration of soft and connective tissue.



www.meccellis.com

MAKING SAFE TECHNOLOGIES AVAILABLE

CELLIS® BIOLOGIC IMPLANT

The biological implant CELLIS® is made from porcine collagen dermis.

The production process preserves the essential qualities of the extracellular matrix.

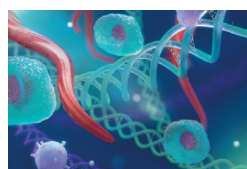
The implant is purified from its genetic elements (cells, DNA, RNA, epitopes) allowing optimal support throughout the tissue regeneration process.

CELLIS® BENEFITS

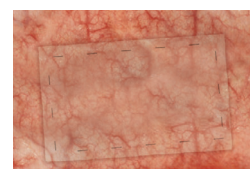
- + **100% biologic:**
no preservative agent
- + **Flexibility**
- + **Adapted shapes**
- + **Easy to use**
- + **Fast hydration**



Dermis strength maintained



Endogenous neo-tissue building



Optimal tissue integration

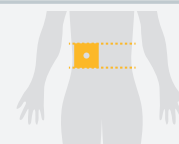
CELLIS® references:



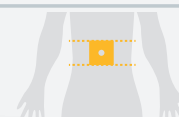
sizes	product code	thickness	shape
10 x 15 cm	C1015E	1,4 mm	
15 x 20 cm	C1520E	1,4 mm	
18 x 25 cm	C1825E	1,4 mm	
20 x 30 cm	C2030E	1,4 mm	
30 x 30 cm	C3030E	1,4 mm	
20 x 50 cm	C2050E	1,4 mm	
30 x 40 cm	C3040E	1,4 mm	



8 x 8 cm	CS88F	0,9 mm
10 x 10 cm	CS1010F	0,9 mm



8 x 8 cm	CH88E	1,4 mm
10 x 10 cm	CH1010E	1,4 mm



Clinical INDICATIONS⁽¹⁾

The biological implant CELLIS® is indicated for the soft tissue repair in complex abdominal wall surgery for which synthetic implants are not adapted (peristomal hernia, incisional hernia, skin defect, ostomy closure...).

Inert, non immunogenic and perfectly biocompatible, the CELLIS® implant can be used for patients with a risk of septic environment.



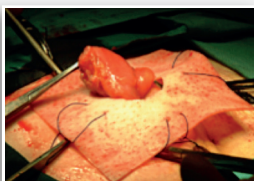
Examples of CLINICAL CASES

Case 1



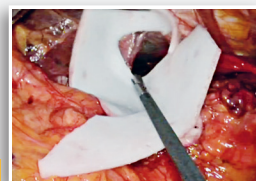
This is the case of an incisional hernia with skin necrosis, occlusion of the small intestine and skin defect. A CELLIS® implant of 20 x 30 cm is positioned into the intra-abdomen to reinforce the abdominal wall.

Case 2



This is a definitive colostomy. The CELLIS® Stoma implant of 10 x 10 cm was implanted. Prophylactic use of CELLIS® Stoma can also be recommended for stoma closure to prevent potential herniation.

Case 3



This is the case of an obese patient who had a hiatal hernia due to a too wide distance between the pillars of the diaphragm for normal closure. A CELLIS® Hiatus implant of 10 x 10 cm was used.

⁽¹⁾Brochure is intended for healthcare professionals only.
The « Instructions for Use » attached to the packaging of each CELLIS products should be read carefully.



Closer to surgeons

Meccellis® Biotech is a company selling biological implants made with acellular dermis. Born from the aspiration to better serve surgeons and patients and to correspond to their daily needs.

Our biological implants CELLIS® are the results of a tissue and cellular engineering and continuous dialogue with surgeons.

The constant awareness of the medical world is the foundation of our values, it guarantees the quality of our products.

Making high technologies accessible is at the heart of our concerns

Through the collaboration with scientific committees and surgical teams that trust us, we identify unmet clinical needs and offer the adapted solution by type of surgery.

Our product range CELLIS® will soon be available for new clinical indications.

Our signature carries our ambition:

MAKING SAFE TECHNOLOGIES AVAILABLE

TOMORROW'S OPERATIONS TODAY

Meccellis® Biotech focuses all its know-how in support of surgery.

Class 3 medical device – CE 0499
Version July 2014



Head office
Creatio® TECH - 40, rue Chef de Baie - Bâtiment 3
17 000 LA ROCHELLE - FRANCE
Ph: +33 (0)6 58 43 03 87 / +33 (0)7 61 31 11 33
contact@meccellis.com
www.meccellis.com

Distributed by

